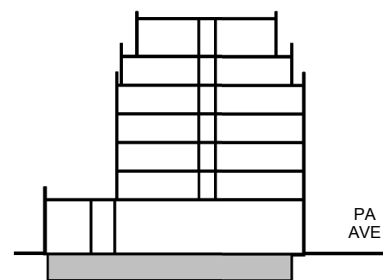
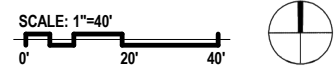


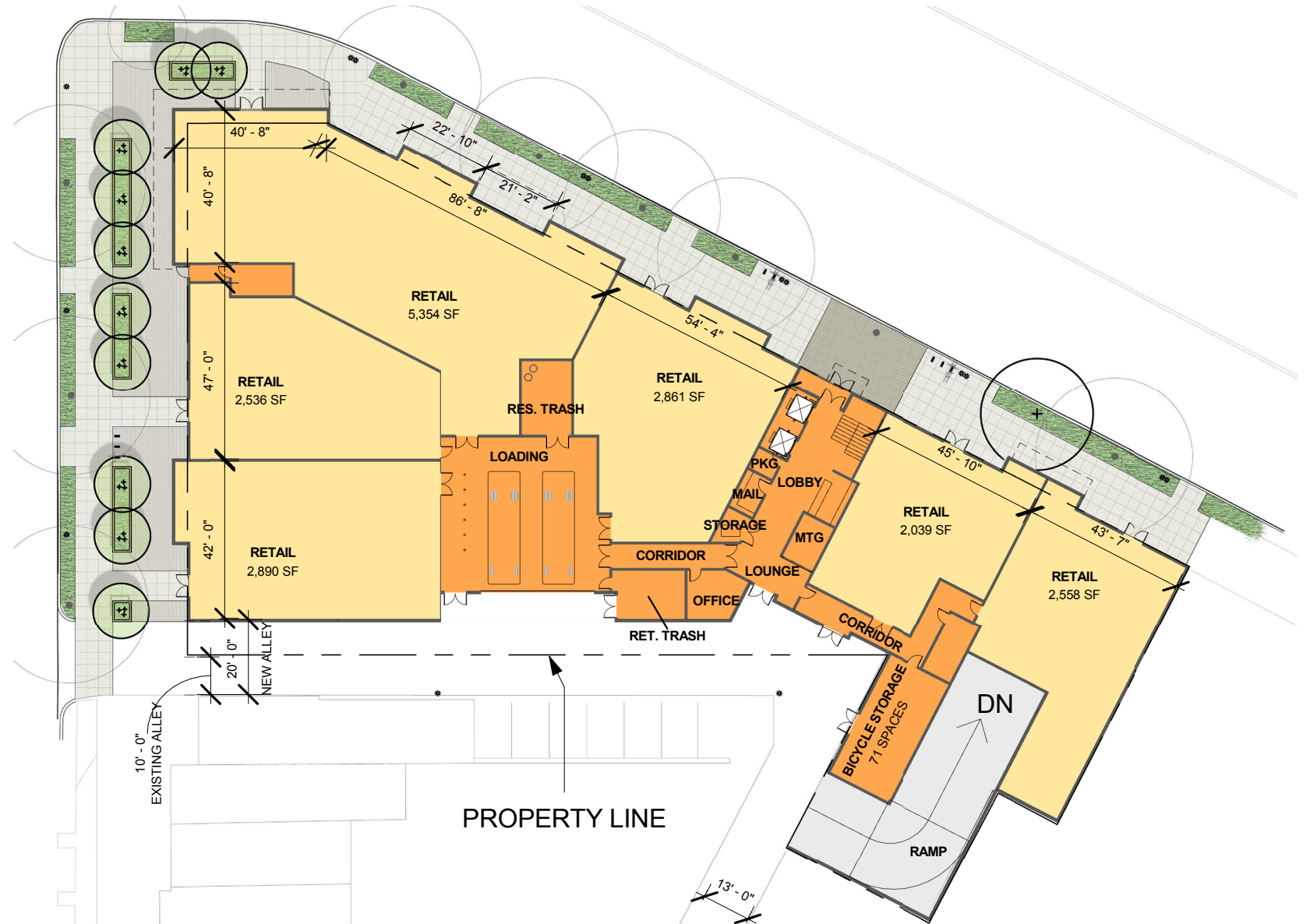
**FLOOR 0 - PARKING**



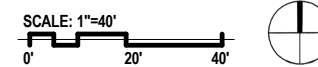
PARKING SPACES	
SIZE	#
ADA (9' x 19')	2
COMPACT (8' x 16')	14
STANDARD (9' x 19')	42
Totals:	58



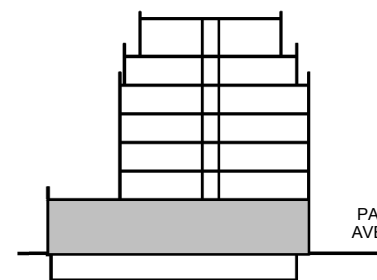
DEDICATED BICYCLE STORAGE ABOVE PARKING SPACE, SEE BICYCLE AMENITY SHEET FOR DETAILS



**FLOOR 1 - RETAIL**



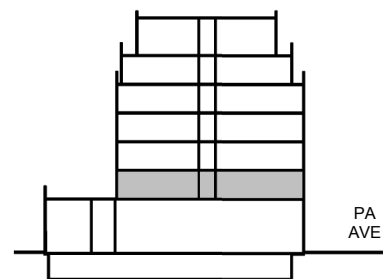
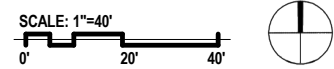
NOTE: THE NUMBER OF BICYCLE PARKING SPACES IS APPROXIMATE AND MAY VARY DEPENDING ON FINAL DESIGN DEVELOPMENT



NOTE: INTERIOR CONFIGURATIONS OF BUILDINGS ARE FOR ILLUSTRATIVE PURPOSES ONLY AND ARE SUBJECT TO MODIFICATION DURING PERMIT PROCESS



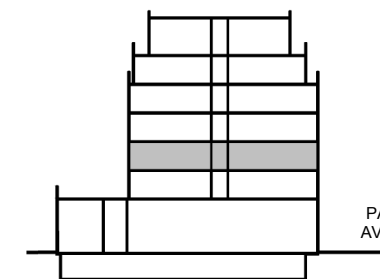
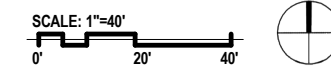
FLOOR 2 - RESIDENTIAL



LOCATION KEY



FLOOR 3 - RESIDENTIAL



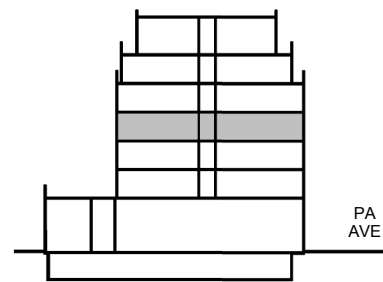
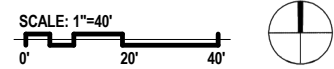
LOCATION KEY

--- BUILDING FOOTPRINT AT SET-DOWN

NOTE: INTERIOR CONFIGURATIONS OF BUILDINGS ARE FOR ILLUSTRATIVE PURPOSES ONLY AND ARE SUBJECT TO MODIFICATION DURING PERMIT PROCESS



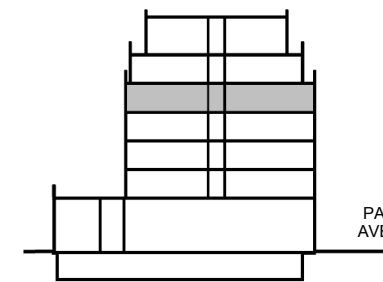
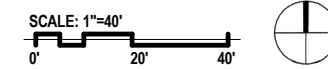
FLOOR 4 - RESIDENTIAL



LOCATION KEY



FLOOR 5 - RESIDENTIAL



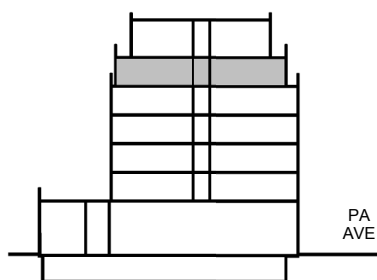
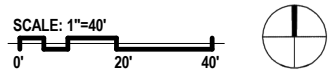
LOCATION KEY

--- BUILDING FOOTPRINT AT SET-DOWN

NOTE: INTERIOR CONFIGURATIONS OF BUILDINGS ARE FOR ILLUSTRATIVE PURPOSES ONLY AND ARE SUBJECT TO MODIFICATION DURING PERMIT PROCESS

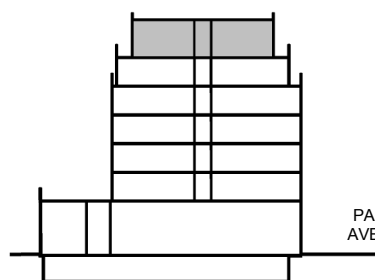
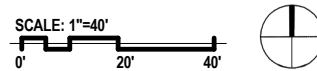


FLOOR 6 - RESIDENTIAL



LOCATION KEY

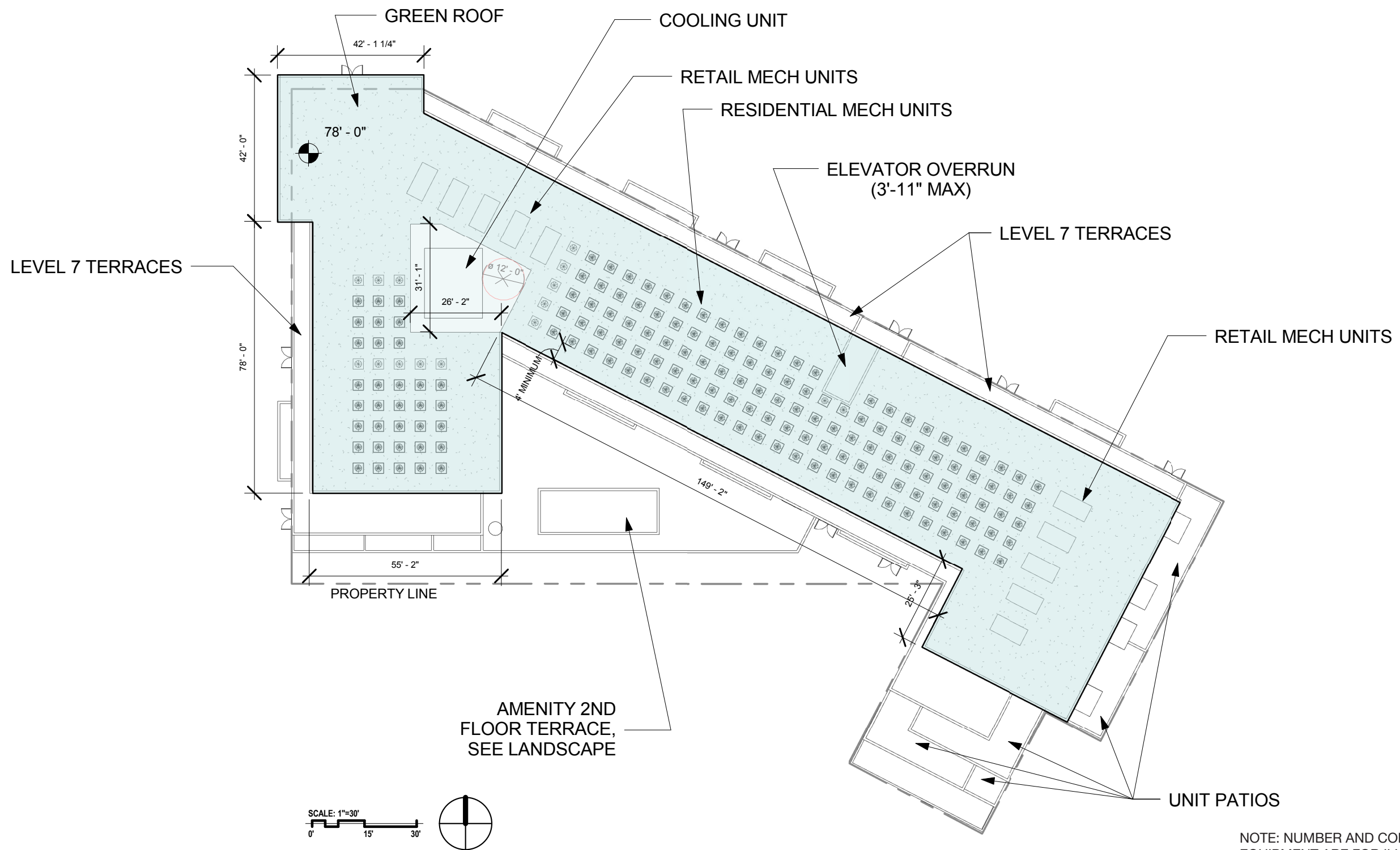
FLOOR 7 - RESIDENTIAL



LOCATION KEY

--- BUILDING FOOTPRINT AT SET-DOWN

NOTE: INTERIOR CONFIGURATIONS OF BUILDINGS ARE FOR ILLUSTRATIVE PURPOSES ONLY AND ARE SUBJECT TO MODIFICATION DURING PERMIT PROCESS



NOTE: NUMBER AND CONFIGURATION OF ROOFTOP EQUIPMENT ARE FOR ILLUSTRATIVE PURPOSES ONLY AND ARE SUBJECT TO MODIFICATION DURING PERMIT PROCESS